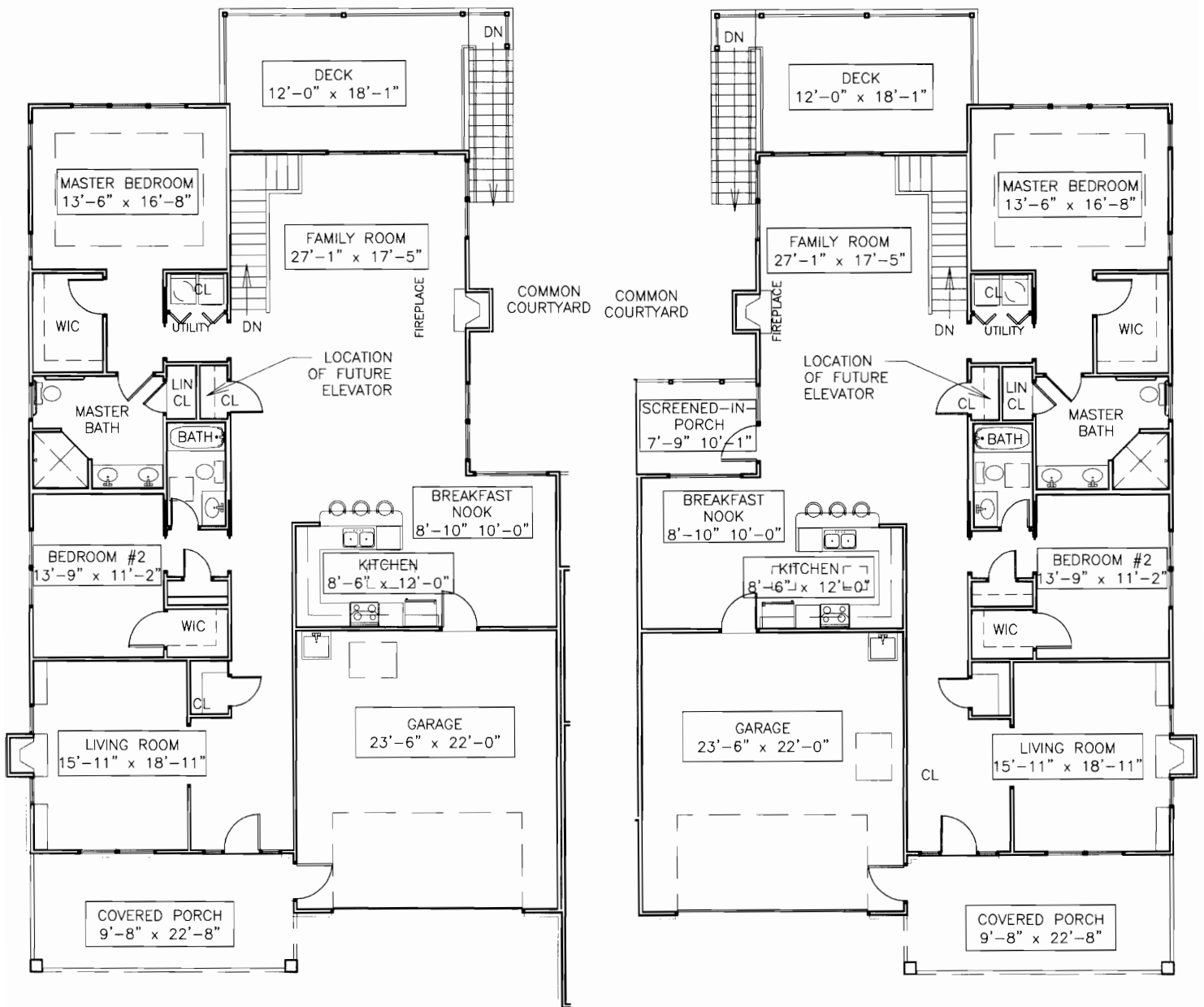


# The Crestwood Homeplan

Main Floor: 2030 sf  
Garage: 546 sf



Sycamore Ridge, at Meadowood, is now available with unlimited possibilities for today's active retiree.

- VARIETY OF SIZES AND FLOOR PLANS
- 10 FOOT CEILINGS
- SPACIOUS ROOMS
- WOOD FLOORING
- CERAMIC TILE
- WHIRLPOOL ENERGY STAR APPLIANCES
- GAS FIREPLACE
- GOURMET KITCHEN
- LARGE DECK WITH WOODED VIEW
- 1.5-2 CAR GARAGES